



## 37 Peak Forest Close, Hyde, SK14 4XD

Harratts Property Services is delighted to present this semi-detached home on Peak Forest Close, in the highly sought-after area of Hyde. This property will be sold with **\*\*NO CHAIN\*\***

This well-designed property offers modern amenities, making it perfect for family living. Upon entering, you'll be greeted by a bright living room, ideal for relaxation or entertaining. The ground floor also features a stylish kitchen with integrated appliances and dining area, providing a fantastic space for family meals, with direct access to the garden.

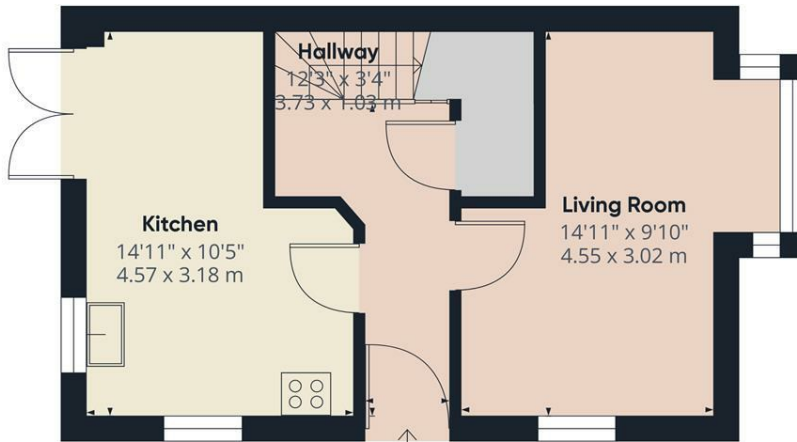
Upstairs, you'll find three well-proportioned bedrooms, including a spacious primary bedroom, as well as a contemporary family bathroom for added convenience.

Externally, the property boasts a private rear garden, perfect for outdoor activities, along with off-road parking for added convenience.

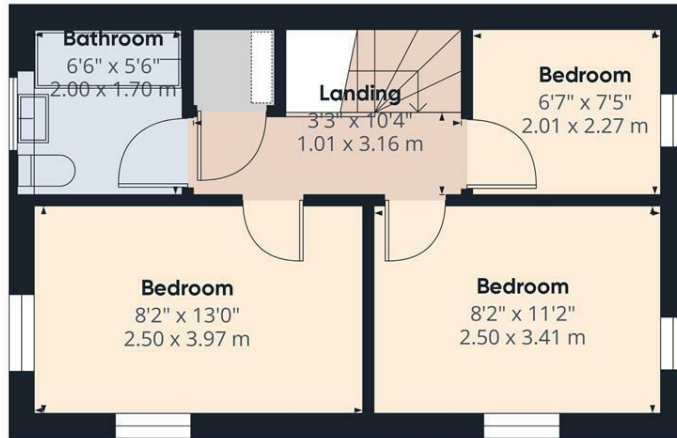
Ideally located close to local amenities, schools, and excellent transport links, this home offers the perfect balance of peaceful living and easy access to everything you need—making it an ideal choice for both families and professionals.

- **\*\*NO CHAIN\*\***
- **Three Bedroom Semi Detached Property**
- **Two Double Bedrooms**
- **Spacious Room Dimensions Throughout**
- **Off Road Parking**
- **Corner Plot Location**
- **Catchment Area Of Good Schools**
- **M67/M60 Motorway Links 5 Minute's Drive**

**£260,000**



Floor 0



Floor 1

**HARRATTS**  
PROPERTY SERVICES

**Approximate total area<sup>(1)</sup>**  
710 ft<sup>2</sup>  
65.96 m<sup>2</sup>

(1) Excluding balconies and terraces

While every attempt has been made to ensure accuracy, all measurements are approximate, not to scale. This floor plan is for illustrative purposes only.

Calculations are based on RICS IPMS 3C standard.

GIRAFFE360

