



## 55 Lowndes Lane, Stockport, SK2 6DP

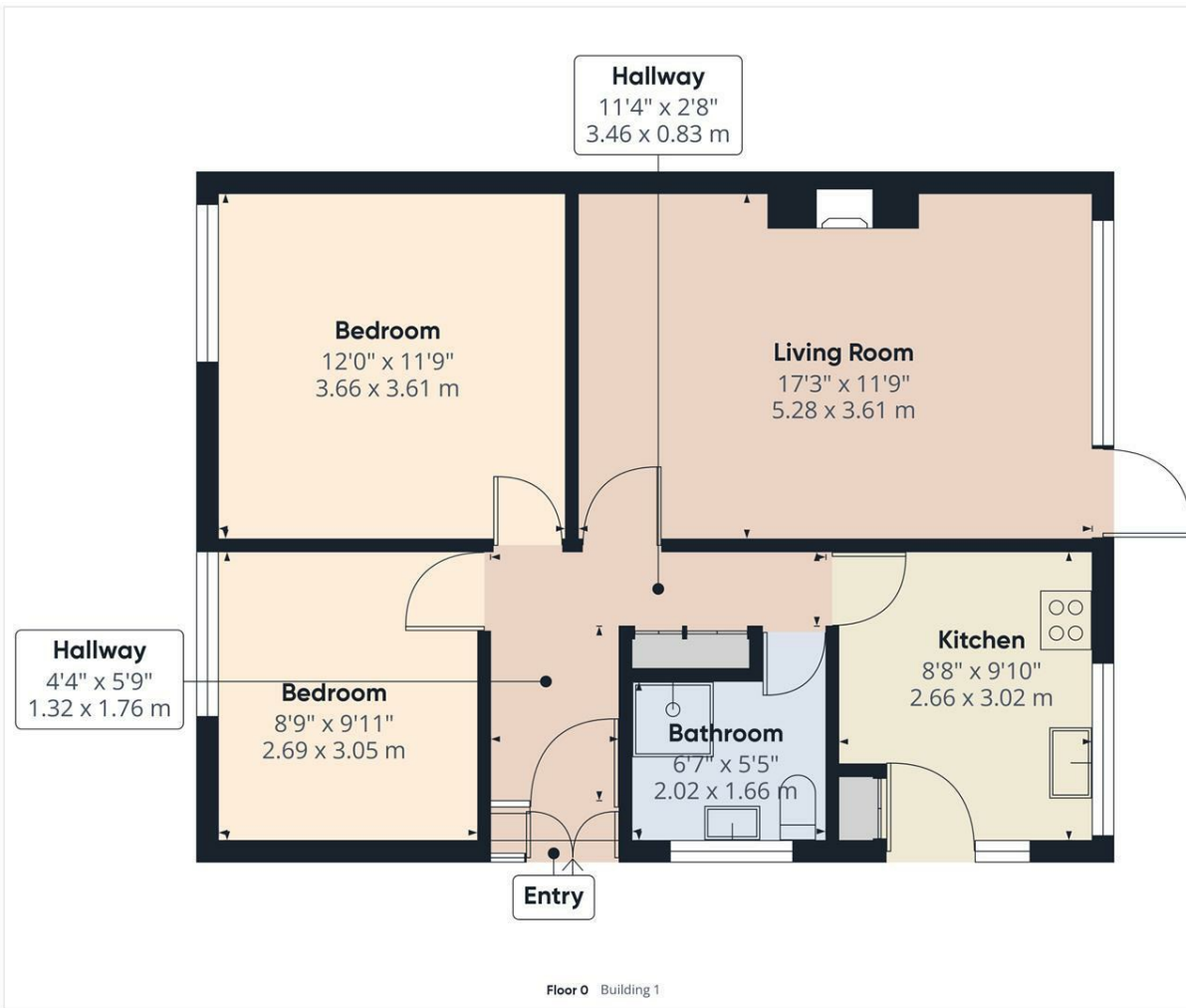
Harratts Property Services is delighted to present this charming two-bedroom semi-detached bungalow for sale, offering generous space both inside and out. The property features well-maintained gardens to both the front and rear, providing a peaceful setting for outdoor activities or relaxation. A private driveway offers off-road parking and leads to a detached garage, ideal for additional storage.

Inside, you'll find a spacious lounge with views over the rear garden, two well-proportioned double bedrooms, and a fitted kitchen with a range of modern base and wall units, providing ample storage and workspace. The well-appointed shower room completes the property, ensuring comfort and convenience throughout.

For more information or to arrange a viewing of this lovely property, please contact our office.

- Two Bedroom Bungalow
- Two Double Bedrooms
- Front & Rear Garden
- Detached Garage
- Popular Location
- Currently Going Through Probate

**£280,000**



Approximate total area<sup>††</sup>  
628.39 ft<sup>2</sup>  
58.38 m<sup>2</sup>

(1) Excluding balconies and terraces.

While every attempt has been made to ensure accuracy, all measurements are approximate, not to scale. This floor plan is for illustrative purposes only.

Calculations were based on RICS IPMS 3C standard. Please note that calculations were adjusted by a third party and therefore may not comply with RICS IPMS 3C.

GIRAFFE360

Floor 0 Building 1

Energy Efficiency Rating		Current	Potential
Very energy efficient - lower running costs			
(92 plus) <b>A</b>			
(81-91) <b>B</b>			
(69-80) <b>C</b>			
(55-68) <b>D</b>			
(39-54) <b>E</b>			
(21-38) <b>F</b>			
(1-20) <b>G</b>			
Not energy efficient - higher running costs			
<b>England &amp; Wales</b>	EU Directive 2002/91/EC		

Environmental Impact (CO <sub>2</sub> ) Rating		Current	Potential
Very environmentally friendly - lower CO <sub>2</sub> emissions			
(92 plus) <b>A</b>			
(81-91) <b>B</b>			
(69-80) <b>C</b>			
(55-68) <b>D</b>			
(39-54) <b>E</b>			
(21-38) <b>F</b>			
(1-20) <b>G</b>			
Not environmentally friendly - higher CO <sub>2</sub> emissions			
<b>England &amp; Wales</b>	EU Directive 2002/91/EC		