



8 Harleen Grove, Stockport, SK2 5DD

Harratts Property Services is delighted to present this charming three-bedroom semi-detached home, located in a highly sought-after area. Offering generous living space across two floors, a rear garden, and off-road parking, this property is perfectly situated just a short distance from local amenities, excellent schools, and convenient bus routes.

Upon entering, you are welcomed by the entrance hallway that leads to the first floor. The bright bay-fronted reception room offers lovely views over the front of the property. To the rear, an additional reception room provides a versatile space that can be tailored to suit your needs. The well-equipped kitchen, located adjacent to the rear reception room, is fitted with a range of eye-level and base units, offering plenty of space for white goods.

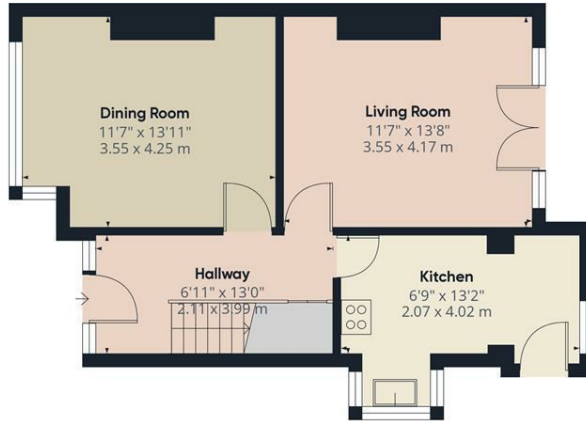
Upstairs, the property boasts three well-proportioned bedrooms, including two spacious double rooms. The first-floor bathroom features a bath with a shower over, a wash basin, and a WC.

Externally, the driveway provides ample off-road parking, while the detached garage offers additional storage space. To the rear, a well-maintained garden provides a pleasant outdoor area to relax and enjoy.

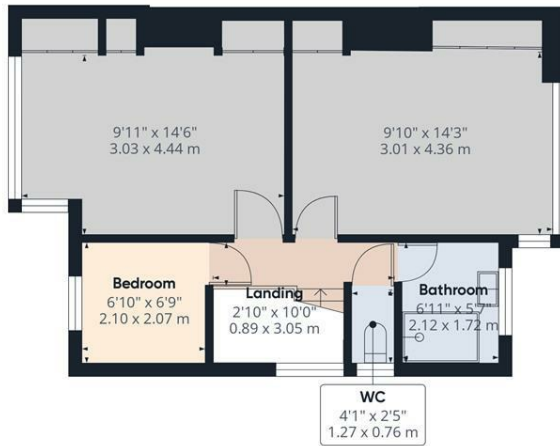
This wonderful home is perfect for those seeking both space and practicality, all within a highly desirable location.

- ****NO CHAIN****
- **Three Bed Semi-Detached Property**
- **Two Large Double Bedrooms**
- **Two Reception Rooms**
- **Ample Sized South Facing Rear Garden**
- **Located On A Cul-De-Sac**
- **Detached Garage**
- **Currently Going Through Probate**

£325,000



Floor 0 Building 1



Floor 1 Building 1

Approximate total area¹⁾
953.25 ft²
88.56 m²

(1) Excluding balconies and terraces

While every attempt has been made to ensure accuracy, all measurements are approximate, not to scale. This floor plan is for illustrative purposes only.
Calculations are based on RICS IPMS 3C standard.

GIRAFFE360

