



46 Larkswood Drive, Stockport, SK2 5XX

This well-presented three-bedroom detached family home offers a comfortable and functional living space with off-road parking, a private rear garden, and an open-plan living area. Located on Larkswood Drive in the sought-after Bosden Farm Estate, the property is conveniently close to local shops, Warren Wood Primary School, and just a short drive from Hazel Grove and Marple village.

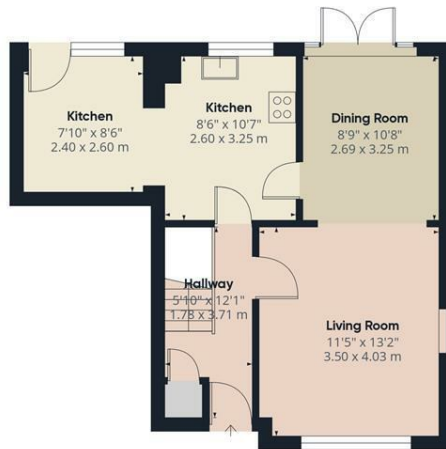
Upon entering, you're welcomed into a hallway with stairs leading to the first floor. The lounge, with views of the front aspect, opens into the spacious dining area, which has patio doors that lead to the private rear garden, making it ideal for entertaining. The kitchen features a range of eye and base level units, along with an integral hob, oven, and ample space for white goods.

On the first floor, you'll find three generously sized bedrooms, two of which are doubles. The family bathroom is equipped with a bath, separate shower cubicle, WC, and hand wash basin. Outside, the large south-facing rear garden provides a high degree of privacy, with a paved patio seating area and a lawn. The front of the property features an integral garage and off-road parking, offering space for multiple vehicles.

This property is an ideal choice for families looking for a spacious and well-located home.

- Three Bedroom Semi-Detached Property
- Two Double Bedrooms
- Open Plan Living Area
- Large Rear South Facing Garden
- Parking For Multiple Vehicles
- Garage For Extra Storage
- Catchment For Warren Wood Primary School
- Sought After Location

£375,000



Floor 0



Floor 1

Approximate total area⁽¹⁾
868.32 ft²
80.67 m²

(1) Excluding balconies and terraces

While every attempt has been made to ensure accuracy, all measurements are approximate, not to scale. This floor plan is for illustrative purposes only.
Calculations are based on RICS IPMS 3C standard.

GIRAFFE360

