



26 Hazelwood Road, Hazel Grove, Stockport, SK7 4LZ

Nestled in the residential area of Hazel Grove, this property is available with no onward chain. This adaptable residence features a spacious lounge, three bedrooms and a garden all situated in a coveted location with exceptional local amenities.

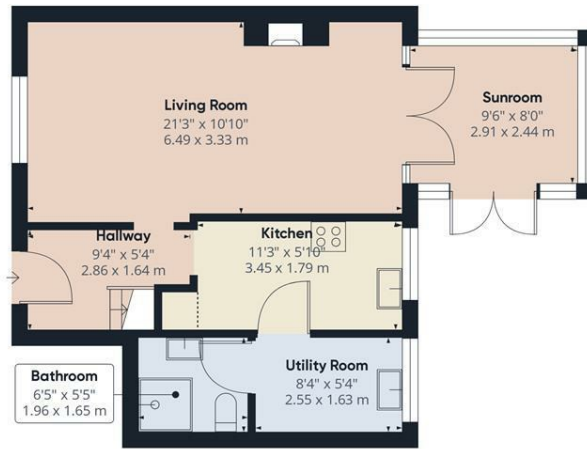
Hazelwood Road has a generously sized sitting/dining room that extends from the front to the back of the property. The kitchen is complemented by a utility room which leads to a W/C and shower room. On the first floor, there are two double bedrooms along with a smaller third room that can serve as an additional bedroom or office space, as well as a bathroom.

Residents will benefit from excellent transport links within walking distance, including Hazel Grove Station, which provides access to Stockport, the Hazel Grove Park and Ride, and various bus routes. Additional local amenities include Stepping Hill Hospital, Torkington Park, and a wide selection of shops and dining options. Families will appreciate the proximity to two outstanding schools—Lisburne School and St. Peter's Catholic Primary—both located within a mile, making this property an excellent choice for those seeking a family-friendly environment with strong connections to Stockport.

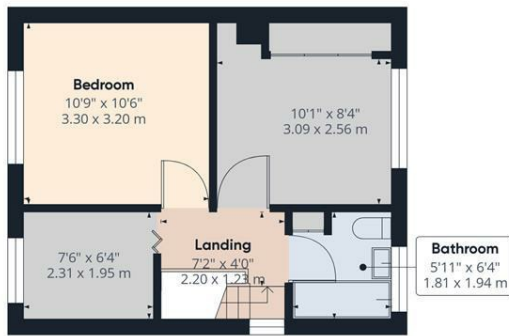
We highly recommend scheduling a viewing to fully appreciate all that this property has to offer. Please contact our office to arrange a viewing 0161 791 1350.

£230,000

- No Onward Chain - Property Is Going Through Probate - Lift Will Be Removed
- Three Bed Semi-Detached House
- Two Double Bedrooms
- Large Reception Room
- Separate Utility Room
- Downstair W/C and Shower Room
- Attached Garage
- Close To Transport Links & Local Shops



Floor 0



Floor 1

Approximate total area⁽¹⁾

843.59 ft²
78.37 m²

Reduced headroom

4.81 ft²
0.45 m²

(1) Excluding balconies and terraces

Reduced headroom
..... Below 5 ft/1.5 m

While every attempt has been made to ensure accuracy, all measurements are approximate, not to scale. This floor plan is for illustrative purposes only.

Calculations are based on RICS IPMS 3C standard.

GIRAFFE360

