



23 The Ridgway, Romiley, SK6 3EE

Harratts Property Services is proud to present this two double-bedroom, semi-detached bungalow. Situated on the popular road The Ridgway, in Romiley.

Upon entering, you are welcomed by a spacious hallway, leading to a generous sized lounge, two double bedrooms, bathroom, and kitchen leading to a sunroom.

Externally, you will discover a large patio garden with a detached garage and a driveway with parking for multiple cars.

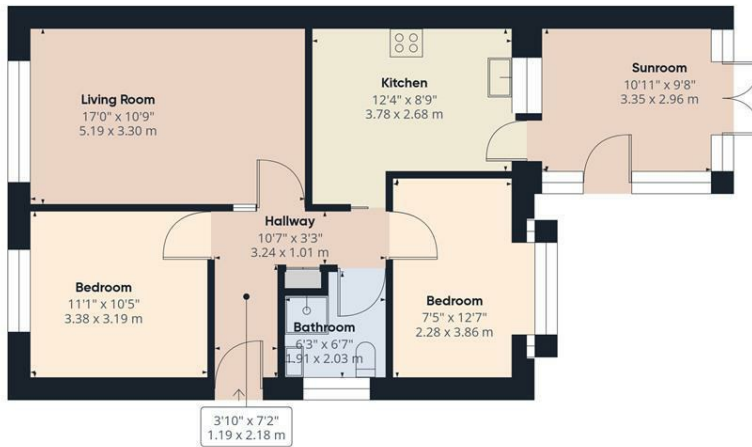
This property is being sold on a NO CHAIN basis.

For further information or to arrange a viewing, please do not hesitate to contact our office.

This charming bungalow offers a perfect blend of comfort and convenience, making it an ideal choice for first-time buyers, downsizers, or investors. The well-proportioned lounge is perfect for relaxation or entertaining guests, while the sunroom provides a delightful space to enjoy the garden views year-round.

- *****NO CHAIN*****
- **Two Double Bedrooms**
- **Parking for Several Cars**
- **Detached Garage**
- **Front And Large Patio Rear Garden**
- **Close To Great Local Schools**

£270,000



Floor 0 Building 1



Floor 0 Building 2

Approximate total area⁽¹⁾
905.03 ft²
84.08 m²

(1) Excluding balconies and terraces

While every attempt has been made to ensure accuracy, all measurements are approximate, not to scale. This floor plan is for illustrative purposes only.

Calculations are based on RICS IPMS 3C standard.

GIRAFFE360

