

28 Knypersley Avenue, Stockport, SK2 5SR

Harratts Property Services presents this delightful home ideal for families looking for space and convenience, situated in a desirable neighborhood close to local amenities, schools, and transport links. The property boasts a warm and inviting atmosphere, perfect for creating lasting memories.

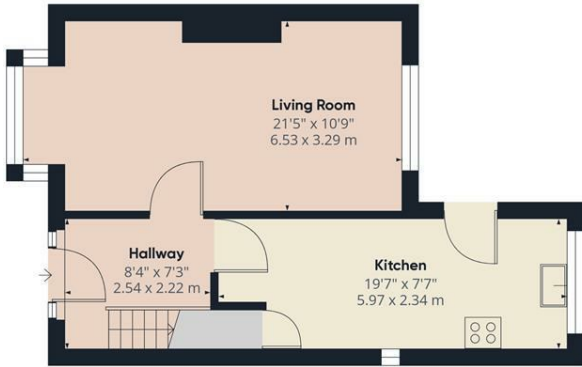
The entrance hallway is not only spacious but also provides a welcoming entry point, leading you into the heart of the home. The through lounge/diner is perfect for entertaining or relaxing with family, featuring large windows that allow natural light to flood in, enhancing the views of the beautiful garden.

The extended kitchen is designed with functionality in mind, equipped with modern appliances that make cooking a pleasure. Ample storage and counter space ensure that meal preparation is effortless, and the layout allows for easy interaction with guests in the dining area.

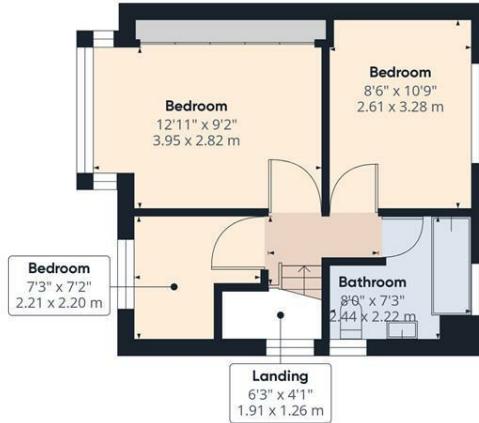
As you ascend to the first floor, you'll find three well-proportioned bedrooms, each offering a peaceful retreat at the end of the day. The family bathroom is tastefully designed, providing a serene space for relaxation with its contemporary fixtures.

- *****NO CHAIN*****
- **Three Bedroom Semi-Detached Family Home**
- **Front And South Facing Ample Sized Rear Garden**
- **Large Lounge/Dining Room**
- **Popular Location**
- **Large Modern Kitchen**

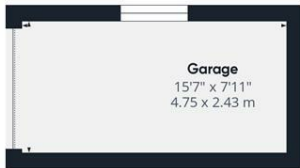
£300,000



Floor 0 Building 1



Floor 1 Building 1



Floor 0 Building 2

Approximate total area¹⁾
886.84 ft²
82.39 m²

(1) Excluding balconies and terraces

While every attempt has been made to ensure accuracy, all measurements are approximate, not to scale. This floor plan is for illustrative purposes only.
Calculations are based on RICS IPMS 3C standard.

GIRAFFE360

