



## 291 Dialstone Lane, Stockport, SK2 7NA

Harratts Property Services is proud to present this beautifully renovated, period, semi-detached home in a highly sought-after location near Stepping Hill Hospital.

Situated on the popular Dialstone Lane in Great Moor, this home has undergone thoughtful refurbishment to create a stunning family residence with potential for further expansion, subject to the necessary permissions.

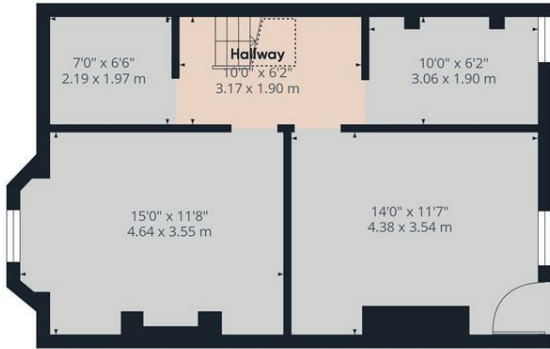
Upon entering, you are welcomed by a spacious hallway adorned with original features, leading to two generously-sized reception rooms and a newly fitted kitchen at the rear. Both rooms boast large windows, allowing an abundance of natural light to fill the space.

Additionally, the property benefits from a basement that spans the entire floorplan, offering exciting possibilities for additional living space.

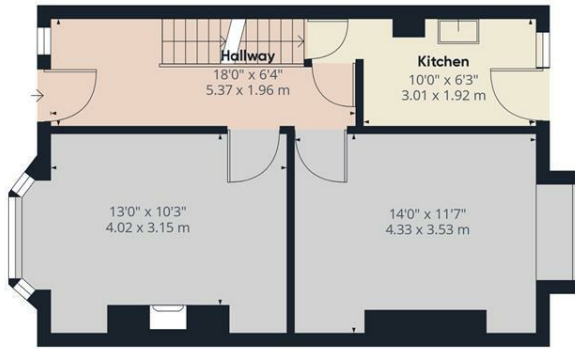
Moving to the upper level, you will find three well-proportioned bedrooms, two of which are doubles, as well as a charming four-piece family bathroom. Furthermore, this property features convenient pull-down loft ladders, providing access to a spacious area ideal for storage purposes.

- **\*\*\*NO CHAIN\*\*\***
- **Three Bedroom Family Home**
- **Full Re-Wire And New Roof**
- **Large Rear Garden**
- **Brand New Kitchen And Bathroom**
- **Basement With Four Chambers**

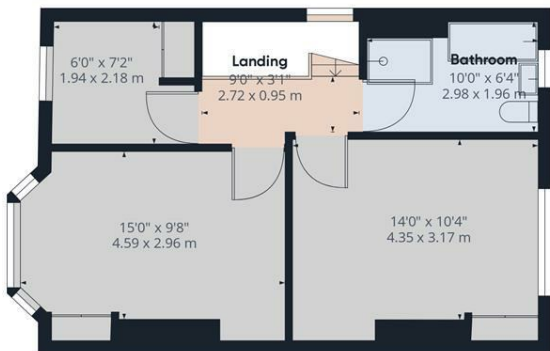
**£340,000**



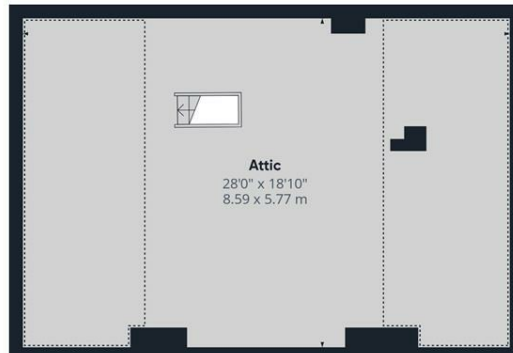
Floor -1



Floor 0



Floor 1



Floor 2

**Approximate total area<sup>m</sup>**  
 1987.02 ft<sup>2</sup>  
 184.6 m<sup>2</sup>

**Reduced headroom**  
 278.35 ft<sup>2</sup>  
 25.86 m<sup>2</sup>

(1) Excluding balconies and terraces.

☒ Reduced headroom  
 (below 1.5m/4.92ft)

While every attempt has been made to ensure accuracy, all measurements are approximate, not to scale. This floor plan is for illustrative purposes only.

GIRAFFE360

